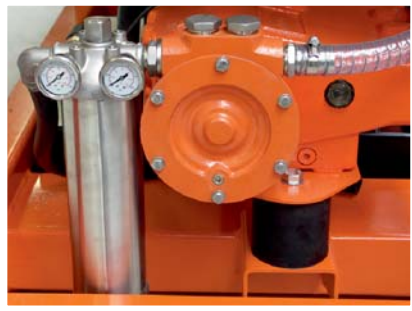


DEN-JET CD50 SERIES

HIGH PRESSURE WATER BLASTERS



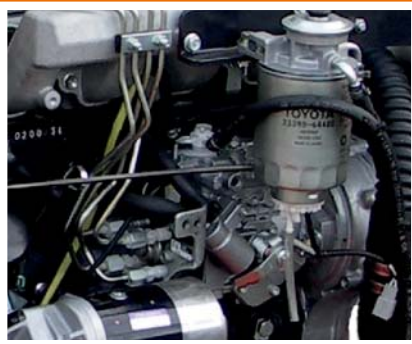
Stainless steel pump-head.



Built-on mechanical feed pump.



Electronic Engine Controller.



4 Cylinder Toyota Engine



Hot Dip Galvanized Frame

Model:	CD50-230	CD50-400	CD50-500	CD50-700	CD50-1000	CD50-1250	CD50-1400	CD50-2000	CD50-2500
Technical details:									
Pump Spec.									
W.P. Bar / Psi	230/3400	400/5800	500/7500	700/10150	1000/15000	1250/18125	1380/20000	2000/29000	2500/36000
Flow Lpm / Gpm	74 / 19,4	40 / 10,5	33 / 8,7	25 / 6,6	20 / 5,3	15 / 4	13,8 / 3,6	10 / 2,6	7 / 1,8
Pump Speed Rpm	1160								
Engine Spec.									
Type	Toyota Diesel 4 cyl. Water cooled								
Power Kw/HP	37 / 50								
Rpm	1800 - 2100								
Fuel Tank- Capacity	90 L / 23,6 Us gallon								
Fuel consumption L / Hour	10 - 12								
Noise db(A) 1m	80								
Dimensions									
L x W x H mm	1550 x 920 x 1250								
Weight Kg	725								

All models are CE marked *) Not ideal for surface preparation due to limited flow-rate

Standard accessories incl. with each machine:

- 20m high pressure hose.
- Trigger operated dump gun
- Barrel Lance with side handle.
- Nozzle Carrier with Nozzle(s).

Optional accessories for each model:

- x m High pressure hoses
- Hose connectors.
- Foot Valve.
- Lances, Nozzles & Rotating Nozzles.
- Floor, Deck & Roof Cleaners
- Spare part kits.

W W . d e n j e t . c o m

DEN-JET



Fuel tank with level gauge



Rotating Nozzle



Water Blasting With Rotating Sapphire Jets.



Strainers & Filtration.

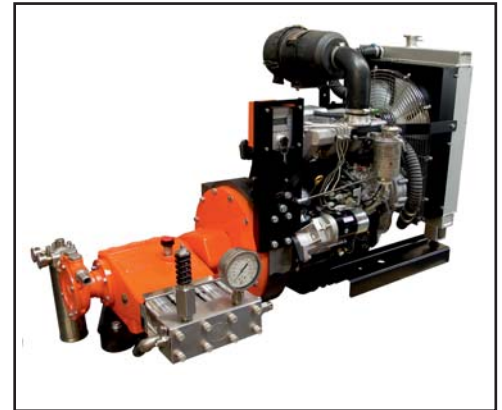


DEN-JET Factory
Denmark

HIGH PRESSURE WATER BLASTERS & ACCESSORIES

The CD50

- With Toyota engine is also available as a Power Pack. The unit is completely self contained and only needs fuel and water supply.
- A remote control system with start/stop, throttle up and down plus two extra functions are also an option.



WB accessories

- Dump & Dry shut guns.
- Foot valves.
- Unloader & Safety valves.
- Hoses & Fittings.
- Nozzles & Nozzle carriers.
- Wet Sand-Blasting Equipment.
- Strainer & Filters.



Spareparts for other brands

- Guns & accessories.
- Fittings & connections.
- Internal pump parts.
- Packings & repair kits.
- Nozzles & Nozzle carriers.



CE 40 Series

- Complete product range of Electric driven high pressure waterblasters ranging from 250 to 2500 Bar in a compact design for multi-purpose applications.
- Various accessories.



Company Profile :

Den-Jet's long experience in the high pressure industry has enabled us to create a range of water blasters and accessories, suitable for numerous applications in the Industrial and Marine markets. DEN-JET supplies complete packages to end-users and distributors, as well as bare shaft pumps and parts to OEM's. Our main goal is to produce quality products at a competitive price level.

Contact:

DEN-JET Nordic A/S - Terndrupvej 7, Astrup, DK9510 Arden, Denmark
Tel: +45-98 55 88 68 - Fax: +45-98 55 88 18 - e-mail: denjetnordic@denjet.com - www.denjet.com

